

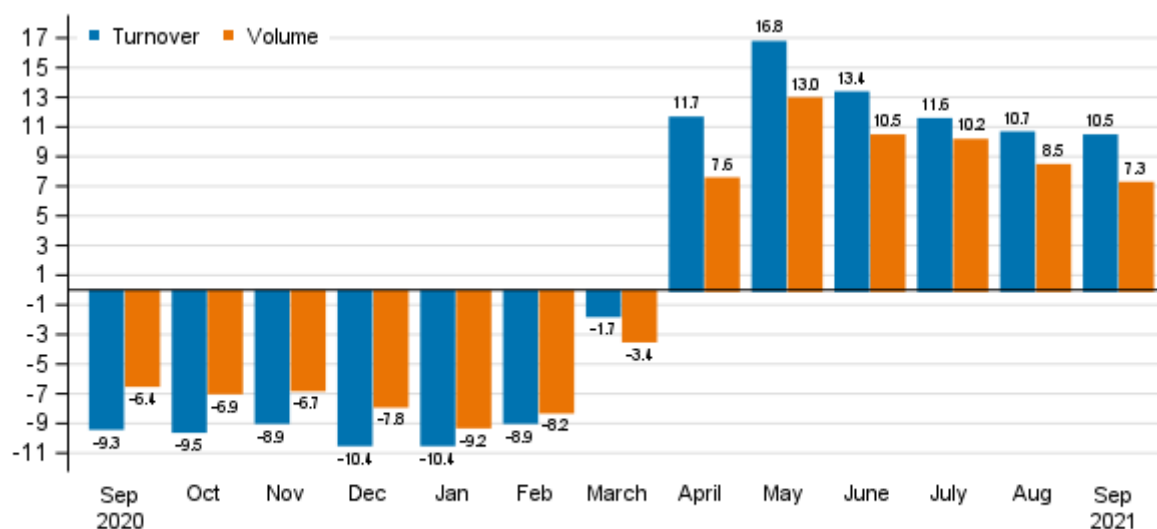
Turnover in service industries

2021, September

Turnover and output in services grew in September

According to Statistics Finland, working day adjusted turnover in service industries grew by 10.5 per cent in September 2021 from September 2020. Service output or volume, from which the impact of prices has been eliminated, grew by 7.3 per cent over the same period. In this year's August, turnover reached a growth of 10.7 per cent, while volume went up by 8.5 per cent from one year back. The development was partly due to the exceptional situation caused by the coronavirus one year earlier. Services are here examined exclusive of trade.

Annual change in working day adjusted turnover and volume of service industries, %



Source: Statistics Finland

Service industries most hit by corona still behind September 2019

Adjusted for working days, turnover in service industries was 0.3 per cent higher in September 2021 than in September 2019 prior to the coronavirus period. In the corresponding period, the volume of the industry grew by 0.4 per cent. However, for some service industries, the development of working day adjusted turnover still remained at a lower level than in September 2019.

In September 2021, working day adjusted turnover in arts, entertainment and recreation activities was 15.7 per cent lower than in September 2019. Turnover in accommodation and food service activities was also 13.7 per cent lower and volume 13.5 per cent lower than in September two years ago. In transportation and storage, in turn, working day adjusted turnover was 10.1 per cent lower and volume 12.5 per cent lower than in September 2019.

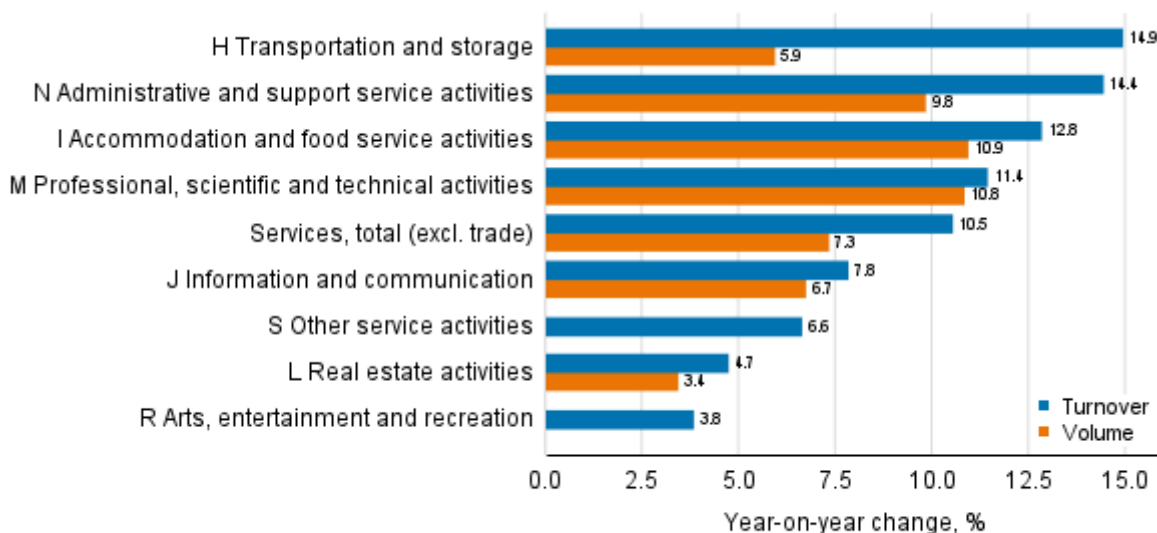
All main service industries grew in September 2021

Turnover and volume grew in all main service industries from September 2020. In transportation and storage, turnover went up by 14.9 per cent while volume grew by 5.9 per cent. In administrative and support service activities, working day adjusted turnover rose by 14.4 per cent and volume by 9.8 per cent from September the year before. Working day adjusted turnover of accommodation and food service activities grew by 12.8 per cent from September 2020 while the volume of the industry rose by 10.9 per cent.

Professional, scientific and technical activities also grew faster than the average development for service industries, as turnover adjusted for working days grew in September 2021 by 11.4 per cent and volume by 10.8 per cent from one year before.

In information and communication activities, working day adjusted turnover grew by 7.8 per cent from September 2020 while the volume of the industry was growing by 6.7 per cent over the same period. In turn, working day adjusted turnover of other service activities grew by 6.6 per cent from September 2020. In September 2021, working day adjusted turnover in real estate activities went up by 4.7 per cent and volume by 3.4 per cent from September 2020. Correspondingly, working day adjusted turnover in arts, entertainment and recreation activities grew by 3.8 per cent.

Annual change in working day adjusted turnover and volume of service industries, September 2021, % (TOL 2008)

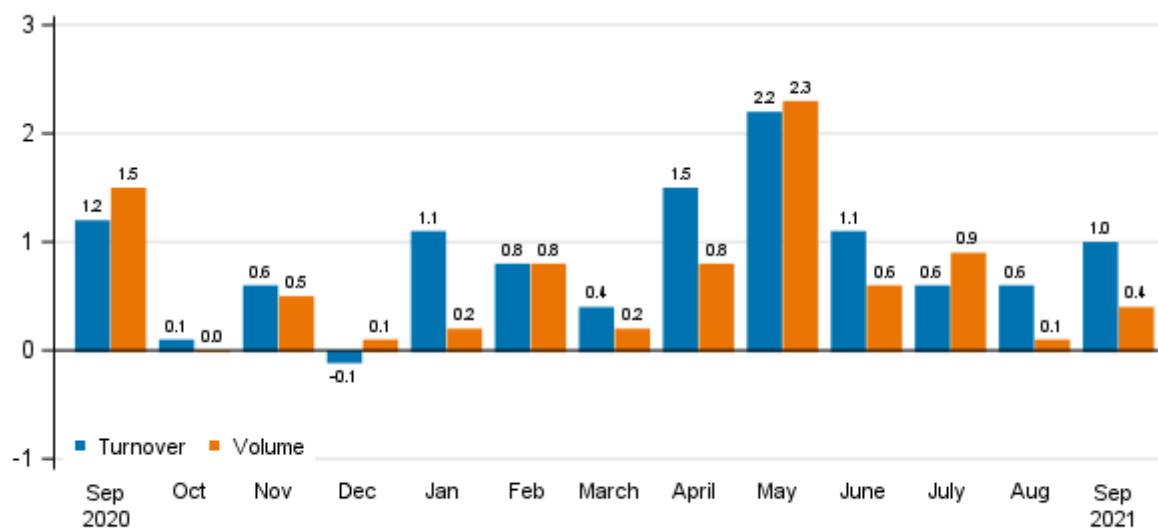


Source: Statistics Finland

Turnover and output grew from the previous month

Seasonally adjusted turnover in service industries rose by 1.0 per cent in September 2021 compared with August. The output of services, from which the impact of prices has been eliminated, grew by 0.4 per cent over the same period. In August 2021, turnover grew by 0.6 per cent from July while volume remained almost on level with July.

Change in seasonally adjusted turnover and volume from the previous month of service industries, %



Source: Statistics Finland

The data for the latest month are preliminary and are released at a delay of around six weeks. The data may become significantly revised particularly on more detailed industry levels in coming months. The volume of service industries is calculated by eliminating the effect of price changes from the turnover index.

The factors caused by the variation in the number of weekdays are taken into account in adjustment for working days. This means taking into consideration the lengths of months, different weekdays and holidays. In addition, seasonal variation is eliminated from seasonally adjusted series, on account of which it makes sense to compare observations of two successive months as well.

Contents

Tables

Appendix tables

Appendix table 1. Annual change in working day adjusted turnover and volume in sectors of services, % (TOL 2008).....	5
---	---

Figures

Appendix figures

Appendix figure 1. Turnover and volume of service industries, trend series.....	6
Appendix figure 2. Turnover and volume of transportation and storage, trend series.....	6
Appendix figure 3. Turnover and volume of information and communication, trend series.....	7
Appendix figure 4. Turnover and volume of real estate activities, trend series.....	7
Appendix figure 5. Turnover and volume of professional, scientific and technical activities, trend series.....	8
Appendix figure 6. Turnover and volume of administrative and support service activities, trend series.....	8
Revisions in these statistics.....	9

Appendix tables

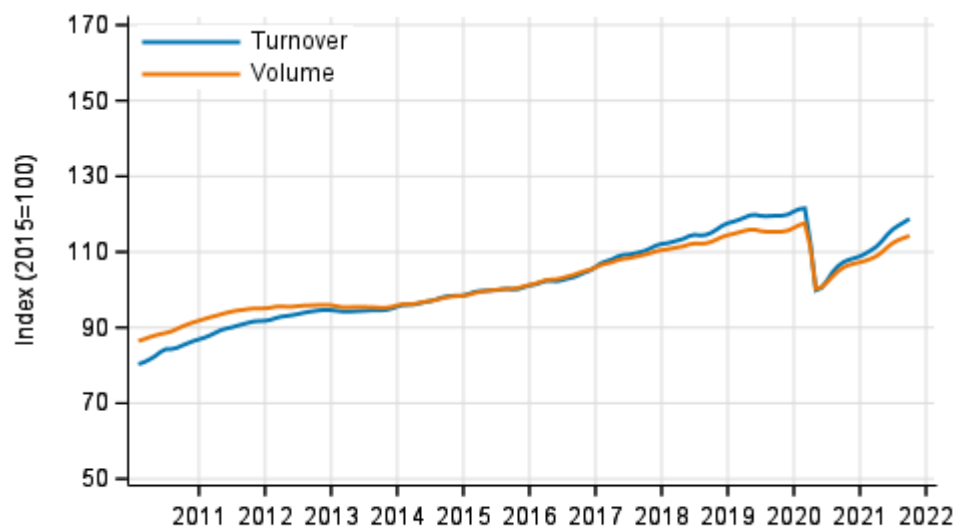
Appendix table 1. Annual change in working day adjusted turnover and volume in sectors of services, % (TOL 2008)

		Year-on-year change by three-month period, % ¹⁾				Cumulative year-on-year change, % ¹⁾	Year-on-year change in the latest month, % ¹⁾
		10-12/2020	01-03/2021	04-06/2021	07-09/2021	01-09/2021	09/2021
HIJLMNRS Other service activities total	Turnover	-9.6	-7.0	13.9	10.9	5.6	10.5
	Volume	-7.2	-6.9	10.4	8.6	3.8	7.3
H Transportation and storage	Turnover	-21.3	-14.1	13.5	14.3	3.6	14.9
	Volume	-18.2	-15.9	5.5	6.1	-2.0	5.9
I Accommodation and food service activities	Turnover	-35.0	-34.3	54.1	13.5	3.9	12.8
	Volume	-35.1	-36.0	51.0	12.3	2.1	10.9
J Information and communication	Turnover	2.5	3.6	8.3	8.5	6.8	7.8
	Volume	3.8	4.8	7.9	7.3	6.7	6.7
L=68 Real estate activities	Turnover	0.2	0.6	6.7	5.7	4.4	4.7
	Volume	-0.6	-0.7	5.5	4.5	3.1	3.4
M Professional, scientific and technical activities	Turnover	-0.4	-1.8	14.4	11.6	7.9	11.4
	Volume	0.6	-2.9	13.1	10.6	6.8	10.8
N Administrative and support services activities	Turnover	-10.7	-8.2	16.7	13.1	6.8	14.4
	Volume	-8.5	-6.4	11.2	8.9	4.5	9.8
R Arts, entertainment and recreation	Turnover	-24.5	-23.8	24.0	9.2	-0.8	3.8
S Other service activities	Turnover	-6.0	-4.1	15.4	6.3	5.6	6.6

1) Year-on-year change compares the value for an examined time period to the value for the corresponding time period twelve months back.

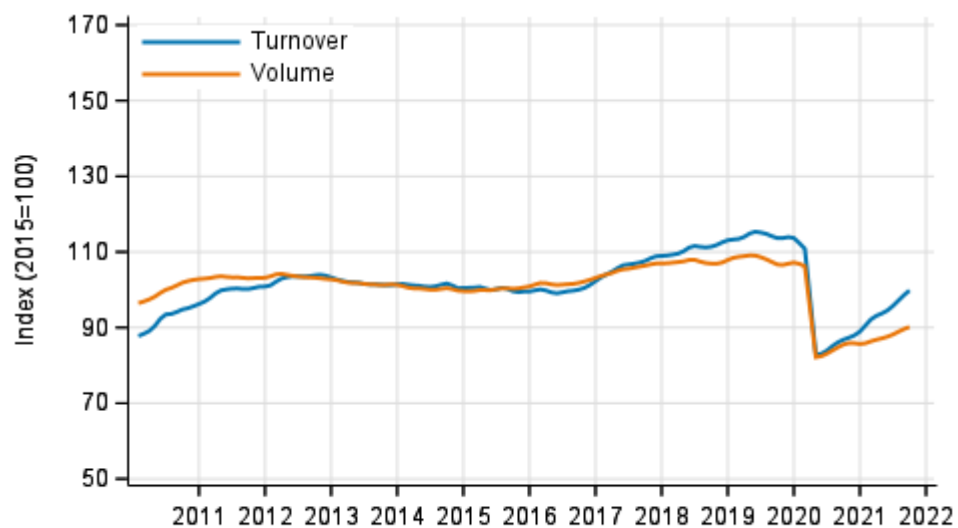
Appendix figures

Appendix figure 1. Turnover and volume of service industries, trend series



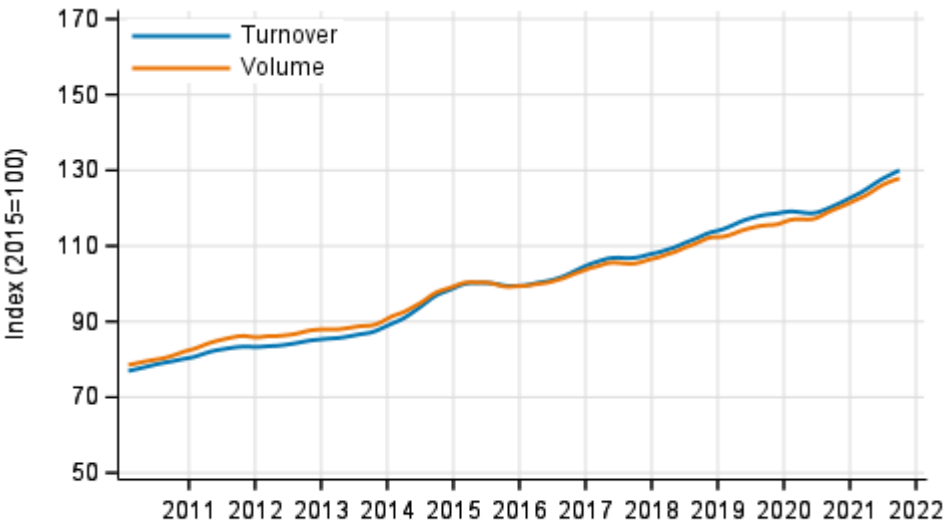
Source: Statistics Finland

Appendix figure 2. Turnover and volume of transportation and storage, trend series



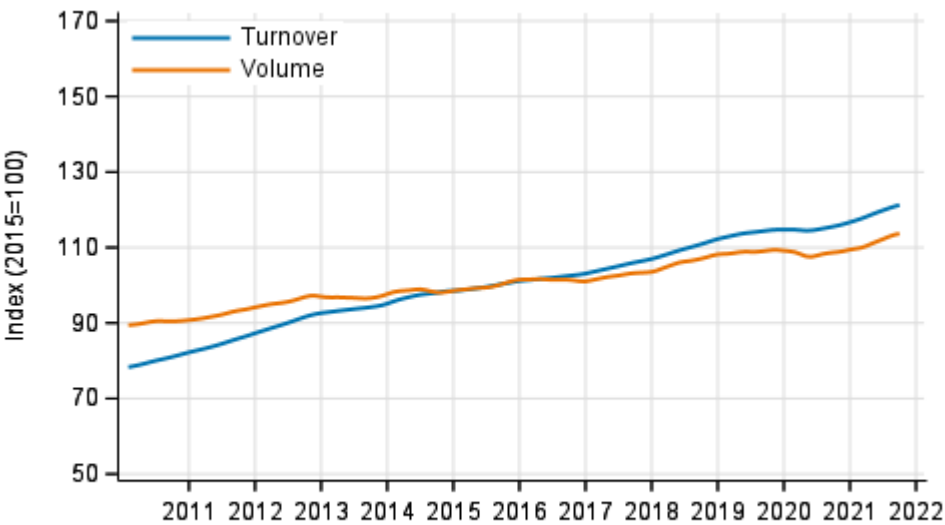
Source: Statistics Finland

Appendix figure 3. Turnover and volume of information and communication, trend series



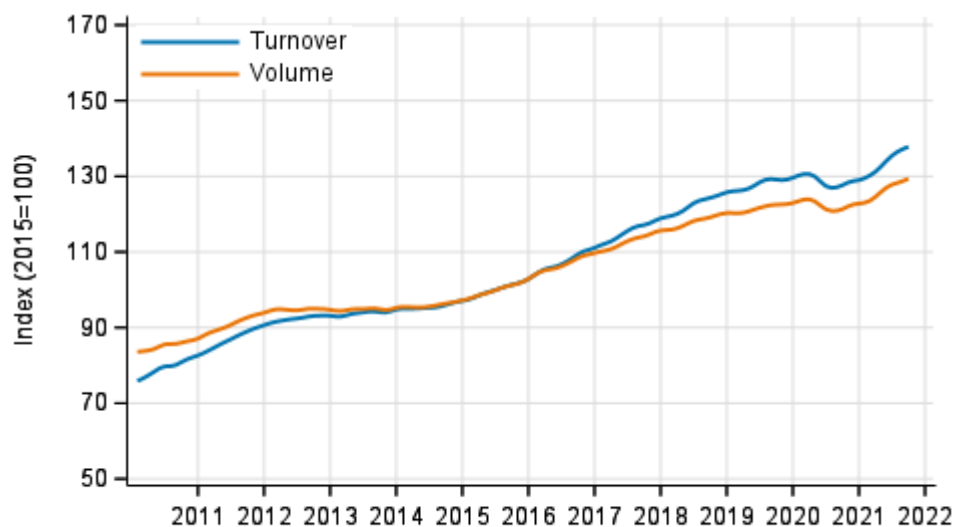
Source: Statistics Finland

Appendix figure 4. Turnover and volume of real estate activities, trend series



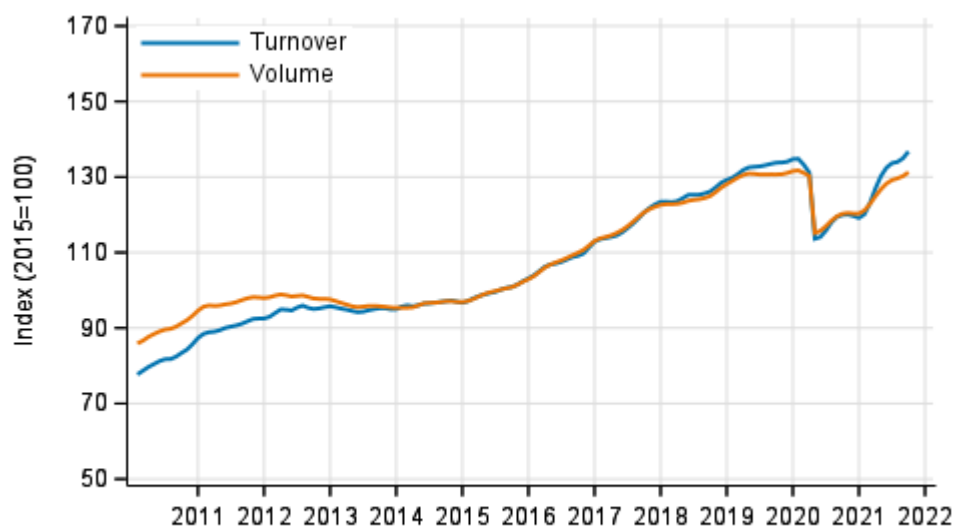
Source: Statistics Finland

Appendix figure 5. Turnover and volume of professional, scientific and technical activities, trend series



Source: Statistics Finland

Appendix figure 6. Turnover and volume of administrative and support service activities, trend series



Source: Statistics Finland

Revisions in these statistics

The data of the statistics have become revised according to the table below. Revisions to annual changes in all industries published from the statistics are presented in the StatFin database tables [on the monthly level](#) and [on the annual level](#). For more information about data revisions, see Section 3 of the quality description (only in Finnish).

Revision to annual changes in working day adjusted turnover in sectors of services¹⁾

Industry / Reference period		Year-on-year change,%		Revision, percentage point
		1st release	Latest release (2021-11-15)	
HIJLMNRS Other service activities total	04/2021	12.2	11.7	-0.5
	05/2021	17.0	16.8	-0.2
	06/2021	14.3	13.4	-0.9
	07/2021	12.5	11.6	-0.9
	08/2021	9.7	10.7	1.0
H Transportation and storage	04/2021	12.5	12.9	0.4
	05/2021	13.3	14.1	0.8
	06/2021	12.7	13.5	0.8
	07/2021	13.5	14.0	0.5
	08/2021	12.0	14.0	2.0
I Accommodation and food service activities	04/2021	63.7	70.3	6.6
	05/2021	95.9	93.9	-2.0
	06/2021	38.6	26.5	-12.1
	07/2021	20.4	20.9	0.5
	08/2021	11.7	6.5	-5.2
J Information and communication	04/2021	6.1	5.3	-0.8
	05/2021	9.5	9.3	-0.2
	06/2021	10.6	10.5	-0.1
	07/2021	9.3	7.4	-1.9
	08/2021	10.0	10.3	0.3
L=68 Real estate activities	04/2021	7.6	8.4	0.8
	05/2021	9.7	7.6	-2.1
	06/2021	7.7	4.5	-3.2
	07/2021	4.6	4.4	-0.2
	08/2021	5.0	8.2	3.2
M Professional, scientific and technical activities	04/2021	12.3	10.5	-1.8
	05/2021	17.4	17.3	-0.1
	06/2021	14.0	15.3	1.3
	07/2021	15.8	12.7	-3.1
	08/2021	9.0	10.9	1.9
N Administrative and support services activities	04/2021	14.7	15.3	0.6
	05/2021	19.8	19.0	-0.8
	06/2021	16.1	15.7	-0.4
	07/2021	14.0	13.5	-0.5
	08/2021	10.4	11.3	0.9
R Arts, entertainment and recreation	04/2021	18.4	8.9	-9.5
	05/2021	21.6	31.3	9.7
	06/2021	30.5	30.8	0.3
	07/2021	14.6	14.7	0.1
	08/2021	8.5	9.8	1.3

Industry / Reference period		Year-on-year change,%		Revision, percentage point
		1st release	Latest release (2021-11-15)	
S Other service activities	04/2021	25.3	20.0	-5.3
	05/2021	21.9	16.0	-5.9
	06/2021	11.8	11.1	-0.7
	07/2021	7.9	6.9	-1.0
	08/2021	2.5	5.5	3.0

1) The 1st release refers to the time when data for the reference period were released for the first time. The revision describes the difference of annual change percentages between the first and latest release.

Revision to long-term annual changes in working day adjusted turnover in sectors of services

Industry	Year	Average ¹⁾	Average for absolute values ²⁾
HIJLMNRS Other service activities total	2017	-1.0	1.0
	2018	-0.8	0.8
	2019	0.3	0.8
H Transportation and storage	2017	-0.3	0.4
	2018	-0.8	0.9
	2019	-0.4	0.6
I Accommodation and food service activities	2017	0.1	0.6
	2018	-0.6	0.6
	2019	0.6	1.2
J Information and communication	2017	-0.1	0.7
	2018	-0.2	0.6
	2019	0.5	1.5
L=68 Real estate activities	2017	-2.5	2.8
	2018	-2.4	2.4
	2019	-0.2	1.4
M Professional, scientific and technical activities	2017	-2.6	2.6
	2018	-1.5	1.5
	2019	0.2	1.0
N Administrative and support services activities	2017	-1.0	1.0
	2018	-1.0	1.1
	2019	0.6	0.9
R Arts, entertainment and recreation	2017	-1.3	2.3
	2018	0.4	0.6
	2019	3.5	3.5
S Other service activities	2017	-0.9	1.1
	2018	-1.2	1.4
	2019	0.5	1.3

1) The average have been calculated upon completion of the data for the first and last release months in the statistical reference year, when the official structural business and financial statement statistics are also published.

2) The average have been calculated from the absolute values of differences between the first and last release months in the statistical reference year, when the official structural business and financial statement statistics are also published.

Inquiries

Aki Niskanen 029 551 2657
Katja Liukkonen 029 551 3515
Tony Valve 029 551 3453
Head of Department in
charge:
Katri Kaaja

myynti.palvelut@stat.fi
www.stat.fi

Source: Turnover of service industries, Statistics Finland